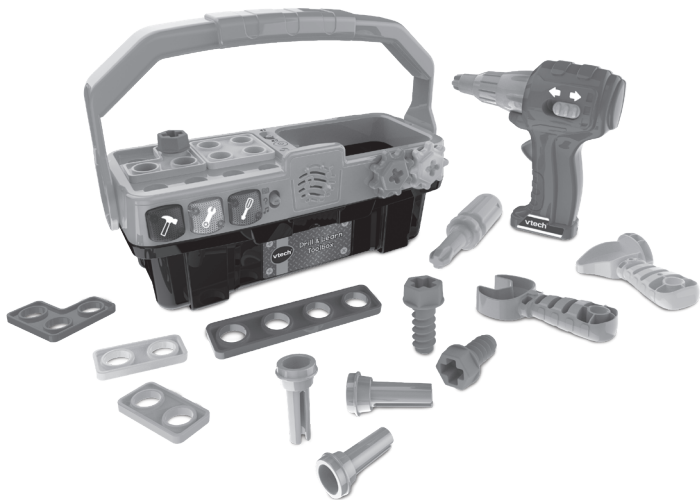


vtech[®]

Instruction Manual

Drill & Learn Toolbox



VTech understands that a child's needs and abilities change as they grow and with that in mind we develop our toys to teach and entertain at just the right level...

vtech Baby

Toys that will stimulate their interest in different textures, sounds and colours

I am...

...responding to colours, sounds and textures

...understanding cause and effect

...learning to touch, reach, grasp, sit-up, crawl and toddle

Birth-36 months



Pre-School

Interactive toys to develop their imagination and encourage language development

I want...

...to get ready for school by starting to learn the alphabet and counting

...my learning to be as fun, easy and exciting as can be

...to show my creativity with drawing and music so my whole brain develops

3-6 years



Electronic Learning Computers

Cool, aspirational and inspiring computers for curriculum related learning

I need...

...challenging activities that can keep pace with my growing mind

...intelligent technology that adapts to my level of learning

...National Curriculum based content to support what I'm learning at school

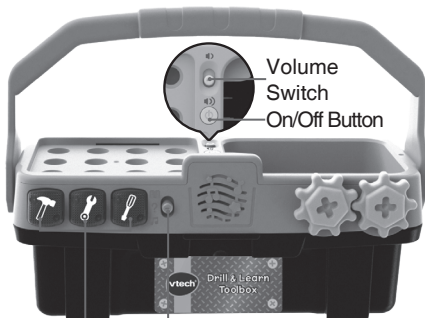
4-10 years



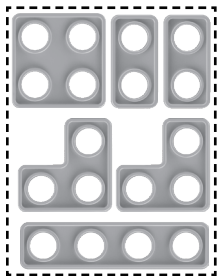
To learn more about this and other VTech® products, visit www.vtech.co.uk

INTRODUCTION

Grow DIY skills with the **Drill & Learn Toolbox!** Use the tools to piece together shapes or spin the gears with the drill. Let's get to work!



Tool Buttons
Mode Switch



Play Pieces X6



Drill



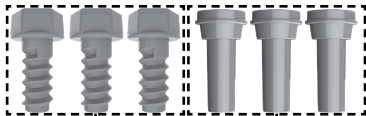
Screwdriver



Spanner



Hammer



Screws X3

Nails X3

INCLUDED IN THE PACKAGE

- **Drill & Learn Toolbox**
- 1 Hammer
- 1 Spanner
- 1 Screwdriver
- 1 Drill
- 3 Nails
- 3 Screws
- 6 Play Pieces
- Project Guide
- Quick Start Guide

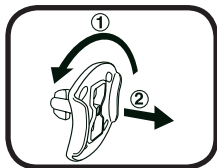
WARNING

All packing materials such as tape, plastic sheets, packaging locks, removable tags, cable ties, cords and packaging screws are not part of this toy and should be discarded for your child's safety.

NOTE

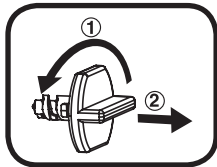
Please save this Instruction Manual it contains important information.

Removing the Packaging Locks



① Rotate the packaging locks 90 degrees anticlockwise.

② Pull out the packaging locks and discard.

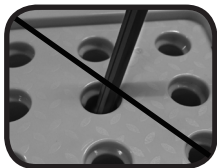


① Turn the packaging locks anticlockwise several times.

② Pull out and discard the packaging locks.

WARNING

Do not insert anything other than the included screws or nails into the holes of the toolbox. Doing so may damage the toolbox.



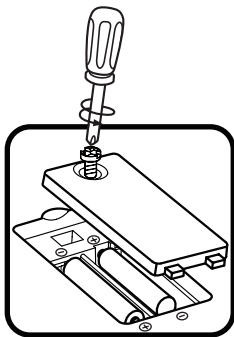
INSTRUCTIONS

WARNING:

Adult assembly required for battery installation.
Keep batteries out of reach of children.

Battery Removal and Installation

1. Make sure the unit is turned **Off**.
2. Find the battery cover located on the bottom of the unit, use a screwdriver to loosen the screw and then open the battery cover.
3. If present, remove old batteries by pulling up on one end of each battery.
4. Install 2 new AA (AM-3/LR6) batteries following the diagram inside the battery box. (For best performance, alkaline batteries or fully charged Ni-MH rechargeable batteries are recommended.)
5. Replace the battery cover and tighten the screw to secure.



IMPORTANT: BATTERY INFORMATION

- Insert batteries with the correct polarity (+ and -).
- Do not mix old and new batteries.
- Do not mix alkaline, standard (carbon-zinc) or rechargeable batteries.
- Only batteries of the same or equivalent type as recommended are to be used.
- Do not short-circuit the supply terminals.
- Remove batteries during long periods of non-use.
- Remove exhausted batteries from the toy.
- Dispose of batteries safely. Do not dispose of batteries in fire.

RECHARGEABLE BATTERIES

- Remove rechargeable batteries (if removable) from the toy before charging.
- Rechargeable batteries are only to be charged under adult supervision.
- Do not charge non-rechargeable batteries.

Disposal of batteries and product



The crossed-out wheellie bin symbols on products and batteries, or on their respective packaging, indicates they must not be disposed of in domestic waste as they contain substances that can be damaging to the environment and human health.

The chemical symbols Hg, Cd or Pb, where marked, indicate that the battery contains more than the specified value of mercury (Hg), cadmium (Cd) or lead (Pb) set out in the Batteries and Accumulators Regulation.



The solid bar indicates that the product was placed on the market after 13th August, 2005.

 Please dispose of your product and batteries responsibly.

In the UK, give this toy a second life by disposing of it at a small electricals collection point* so all of its materials can be recycled.

Learn more at:

www.vtech.co.uk/recycle

www.vtech.com.au/sustainability

* Visit www.recyclenow.com to see a list of collection points near you.



PRODUCT FEATURES

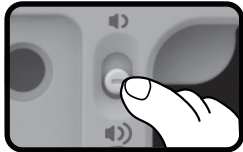
1. On/Off Button

Press the **On/Off Button** to turn the unit On. To turn the unit Off, press the **On/Off Button** again.



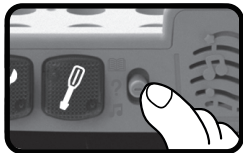
2. Volume Switch

Slide the **Volume Switch** to **High**  or **Low**  to adjust the volume.



3. Mode Switch

Slide the **Mode Switch** to choose an activity. You can choose from three activities.



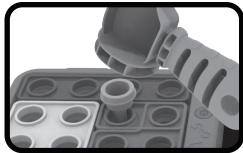
4. Tool Buttons

Press the **Tool Buttons** to learn about tools, answer questions or listen to cheerful songs and melodies.



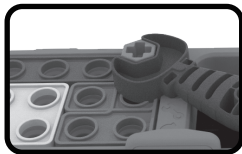
5. Hammer

Use the **Hammer** to insert the **Nails** into the holes or secure the **Play Pieces** onto the tray.



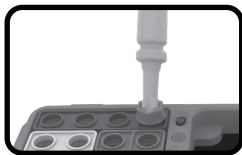
6. Spanner

Use the **Spanner** to insert the **Screws** into the holes or secure the **Play Pieces** onto the tray.



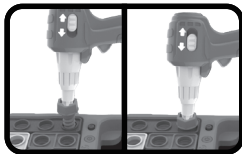
7. Screwdriver

Use the **Screwdriver** to turn the **Screws** into the holes or secure the **Play Pieces** onto the tray.



8. Drill

Use the **Drill** to drill the **Screws** into the holes or secure the **Play Pieces** onto the tray. The **Drill** can turn clockwise or anticlockwise by sliding the **Direction Switch** on the side.



9. Play Pieces

Combine **Play Pieces** with **Screws** or **Nails** to build different projects.



10. Automatic Shut-Off

To prolong battery life, the **Drill & Learn Toolbox** will shut off automatically within one minute without input. The unit can be turned on again by pressing the **On/Off Button**.

The unit will also automatically turn off when battery power is very low. If this occurs, please install a brand new set of batteries.

ACTIVITIES

1. Learning Mode

Learn each tool's facts, usage, sounds, colour and count along with interactive phrases and lights by pressing the **Tool Buttons**.

2. Challenge Mode ?

Time for a tool challenge! Play three types of challenge questions. Answer with the correct **Tool Buttons**!

2.1 Q&A Question

Press the correct **Tool Buttons** to answer questions about tool facts, usage, sounds and colours.

2.2 Follow The Light

Watch the lights illuminate, memorise their sequence, and press the **Tool Buttons** to replicate the pattern! A correct response will advance the game, adding one more light to the sequence.

2.3 Yes Or No Question

Press the **Green Button** to answer Yes or the **Red Button** to answer No. Answer questions correctly to progress.

3. Music Mode

Press the **Tool Buttons** to hear songs about tools, as well as popular nursery rhymes and fun melodies.

SONG LYRICS:

Spanner Song

Twist and turn the bolt to learn,
How to use the spanner,
To the right, right, right,
To make it tight, tight, tight,
To the left, left, left,
To make it loose, loose, loose.

Hammer Song

This is the way we hammer the nail,
Hammer the nail, hammer the nail,
This is the way we hammer the nail,
When we build a house.

Screwdriver Song

When we use the screwdriver,
Hold it steady, hold it still,
Line it up with the screw,
And twist, twist, twist, twist, twist,
Twist it 'til its tight.

CARE & MAINTENANCE

1. Keep the unit clean by wiping it with a slightly damp cloth.
2. Keep the unit out of direct sunlight and away from any direct heat sources.
3. Remove the batteries if the unit will not be in use for an extended period of time.
4. Do not drop the unit on hard surfaces and do not expose the unit to moisture or water.

TROUBLESHOOTING

If for some reason the program/activity stops working or malfunctions, please follow these steps:

1. Please turn the unit **Off**.
2. Interrupt the power supply by removing the batteries.
3. Let the unit stand for a few minutes, then replace the batteries.
4. Turn the unit **On**. The unit should now be ready to play with again.
5. If the product still does not work, install a brand new set of batteries.

If the problem persists, please contact our Consumer Services Department and a service representative will be happy to help you.

CONSUMER SERVICES

Creating and developing **VTech®** products is accompanied by a responsibility that we at **VTech®** take very seriously. We make every effort to ensure the accuracy of the information, which forms the value of our products. However, errors sometimes can occur. It is important for you to know that we stand behind our products and encourage you to call our Consumer Services Department with any problems and/or suggestions that you might have. A service representative will be happy to help you.

UK Customers:

Phone: 0330 678 0149 (from UK) or +44 330 678 0149 (outside UK)

Website: www.vtech.co.uk/support

Australian Customers:

Phone: 1800 862 155

Website: support.vtech.com.au

NZ Customers:

Phone: 0800 400 785

Website: support.vtech.com.au

PRODUCT WARRANTY/ CONSUMER GUARANTEES

UK Customers:

Read our complete warranty policy online at vtech.co.uk/warranty.

Australian Customers:

VTECH ELECTRONICS (AUSTRALIA) PTY LIMITED –
CONSUMER GUARANTEES

Under the Australian Consumer Law, a number of consumer guarantees apply to goods and services supplied by VTech Electronics (Australia) Pty Limited. Please refer to vtech.com.au/consumerguarantees for further information.

**Visit our website for more
information about our products,
downloads, resources and more.**

www.vtech.co.uk
www.vtech.com.au

